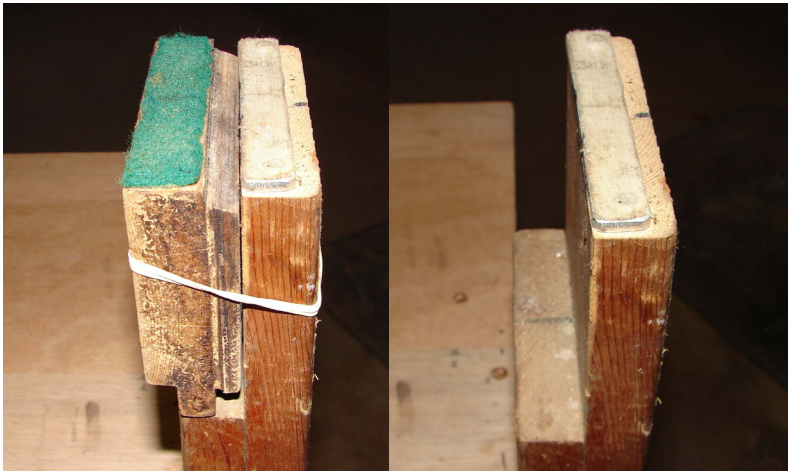


Waterline Checking by Tom Germer

Waterline Jig and Float Tank



Waterline jig with tank in background.



42" and 43" end supports on the jig. The post supports are 210 mm above the jig's deck. The block on one end is used for the 42" waterline and removed for the 43" waterline.



The jig's deck should be level prior to use.



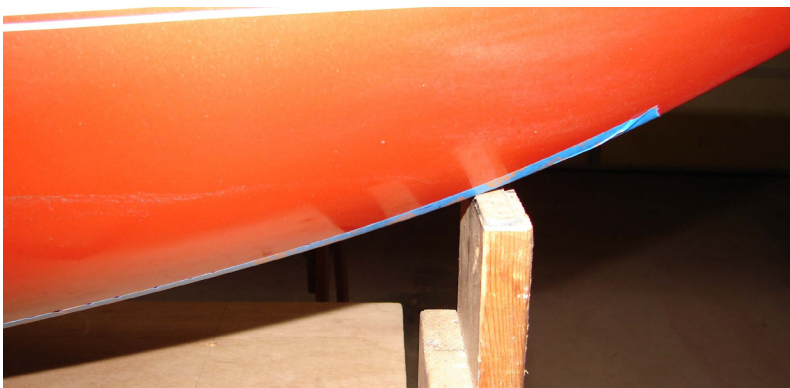
Place masking tape on the stern and bow for marking the water line.



Use a bubble gauge to set the bow angle.
(ie .5 degrees bow up)



With the 42" block on the post, place the boat in the jig and mark the 42" waterline on the stern and bow.



Remove the 42" block and again use the bubble gauge to set the bow angle. Mark the 43" waterline on the stern and bow.



After setting the 43" waterline, check the max. draft with a 10 mm thick block that should pass under the keel.



The max. draft is 200 mm and the posts are 210 mm high.



Portable wood tank with detachable legs. The inside measurements are 60" long, 12" wide, and 9" deep. the sides are tapered in to a bottom that is 4" wide. This reduces the amount of water to fill the tank. The wooden tank is lined with 6 oz. fiber glass.



Removable legs allow for easy transportation to regatta events.



After the hull has been marked in the jig, the boat is placed in the tank. Ensure that the tank has enough water to float the boat. Use a 12.5 oz weight (350 grams) on the mast step and place the battery in the normal place. After the water has settled, use a mirror to view the water and the 42" and 43" marks on the tape. At this time, you make trim adjustments to meet your trim requirements as long as you stay within the 42" and 43" marks.

